

Powering **Steel** Transformation from within

Straightener

Straightener machines are used in the continuous casting process. During continuous casting, molten steel is solidified into semi-finished billets, blooms or slabs for subsequent rolling in finishing mills. Liquid steel is transferred using a ladle to the casting machine. When the casting operation starts, the sliding shutter at the bottom of the ladle is opened and the steel flows at a controlled rate into the tundish and from the tundish into one or more molds. Straighteners ensure the semi-finished product is straight and, by controlling the speed of the steel as it runs

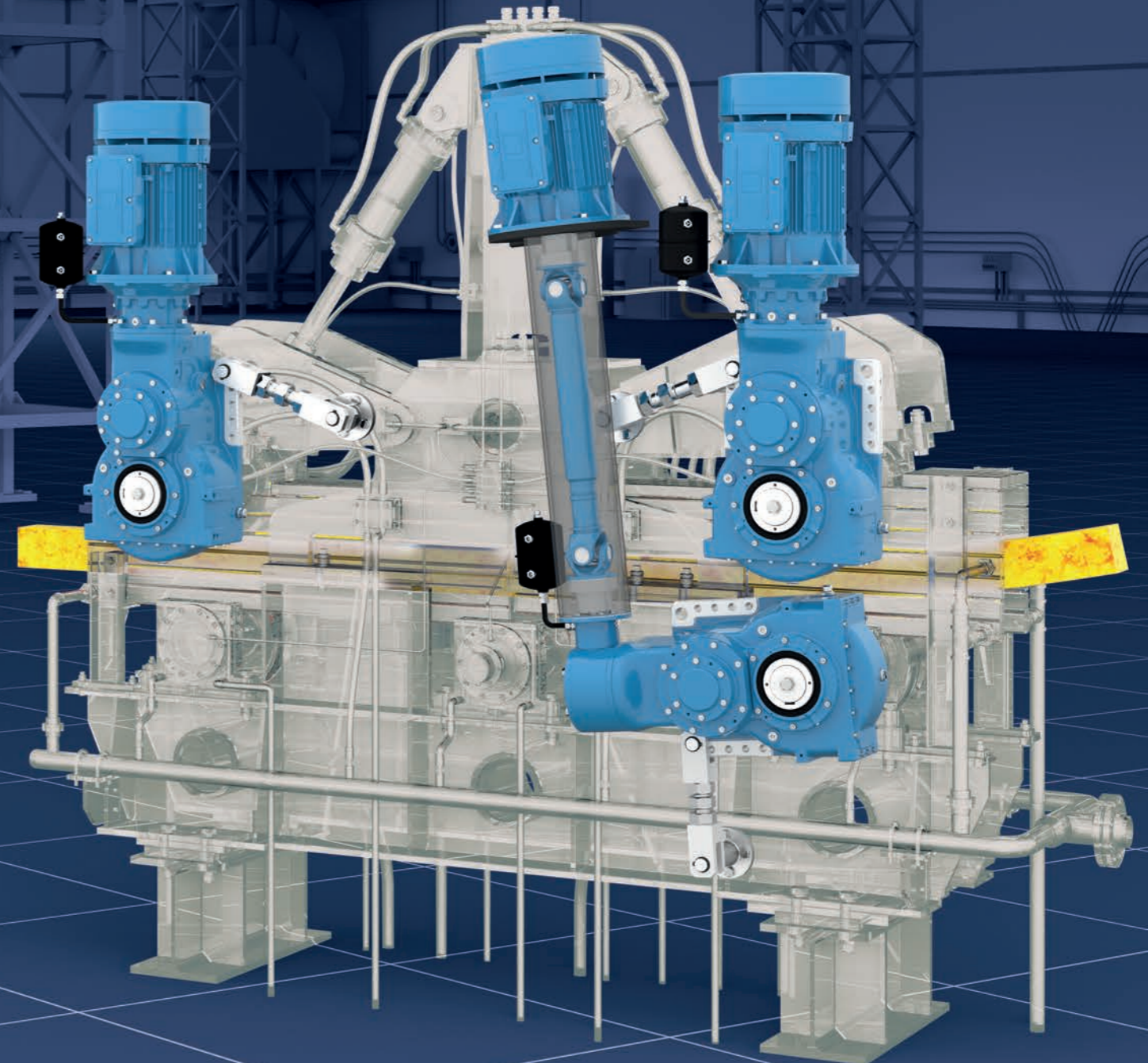
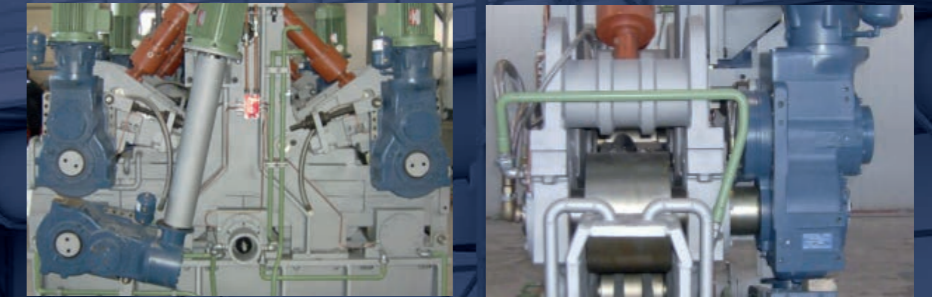
through the rollers, optimizes the quality of the billet, bloom or slab. In most cases straighteners are made by the manufacturers of the continuous casting system. The configuration of the straighteners can differ according to size depending on the product to be straightened (billet, bloom or slab). Different products and relevant sizes define the number of rolls, how many are to be driven and the electric motor power. Gearboxes are generally equipped with cooling coils to cool down the gearbox oil.



Brevini® Plano Helical Gearboxes – Compact Drives

- Light, compact solution
- Spheroidal graphite cast iron housing
- Supports torque range up to 40 kNm
- High efficiency
- Premium sealing
- Easy to assemble/disassemble

Straightener



Dana offers customized solutions to meet a range of customer needs, including modular designs and add-on accessories.